

The background is a light-colored stained glass window. It features several silhouettes: a person on the left, a person in the center, a person on the right, and a building with a dome in the upper right. The glass is divided into various colored panes in shades of blue, green, yellow, and orange.

Annual School Report 2015

STUDENTS FIRST

<https://www.studentsfirst.gov.au/engaging-parents-education>

Why is parent engagement important? Parent engagement is associated with improvements across a range of indicators, including:

- better education outcomes
- enhanced engagement with school work
- more regular school attendance
- better behaviour and increased social skills.

Parent engagement is one of the four pillars of the Australian Government's *Students First* reform agenda for schools.

How you can help your child do well at school

While it's important to stay informed and be involved in school activities where possible, there are lots of things you can do at home which can help your child to do better at school:

- Have high yet achievable expectations of your child.
- Talk regularly about school and the value of learning.
- Encourage positive attitudes and respect for school and teachers.
- Model the behaviours you would like to see in your child.

How you can help your child do well at school. cont

Other things you can do which have also been shown to have a positive impact are to:

- Read out loud with your child and listen to your child read out loud.
- Talk and ask about what they are learning.
- Ask what was and was not fun at school.
- Help them to develop strong work habits

LEAD stands for

LEARNING we are committed to learning at every level

ENGAGEMENT we are committed to Catholic Education's mission through relationships

ACCOUNTABILITY we have personal and collective responsibility for our systems success

DISCIPLESHIP we are committed to deepening our relationship with Jesus

L

- **To increase teacher capacity so as to improve student learning.**
- **Implement practices that: Engage our students to become 21st Century learners (through following an inquiry approach) and Ready our students to engage with the world (locally/globally)**

The background is a light-colored stained glass window with a grid pattern. It features several silhouettes: a person holding a child, a person holding a large globe, and two hands clasped together. The colors are muted, including shades of blue, green, yellow, and red.

E

**Engage parents to become active in their
child's learning**

A

- **Ensure teachers see the importance of..**

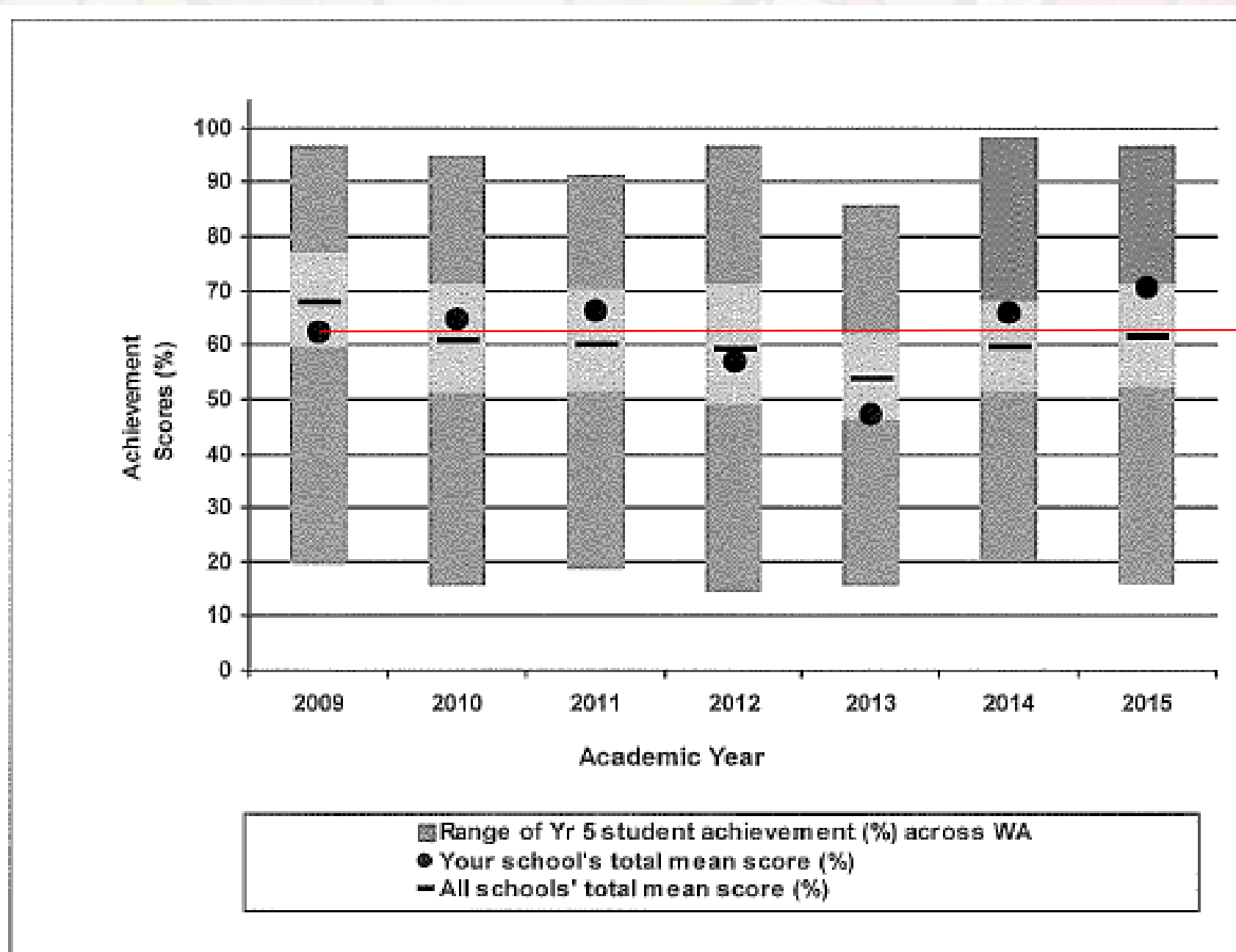
**Focusing on to what we teach → to what we are looking for
→ to how we will see it → to how we will teach it so all
students can achieve or do their very best → to how we will
report their success to their parents honestly & accurately**

- **Enhancing the Early Childhood playground & classrooms to ensure a
balance between indoor & outdoor learning**

D

- **Ensure Gospel Values are prominent and understood within the school community.**

BISHOPS RELIGIOUS LITERACY ASSESSMENT



NAPLAN RESULTS

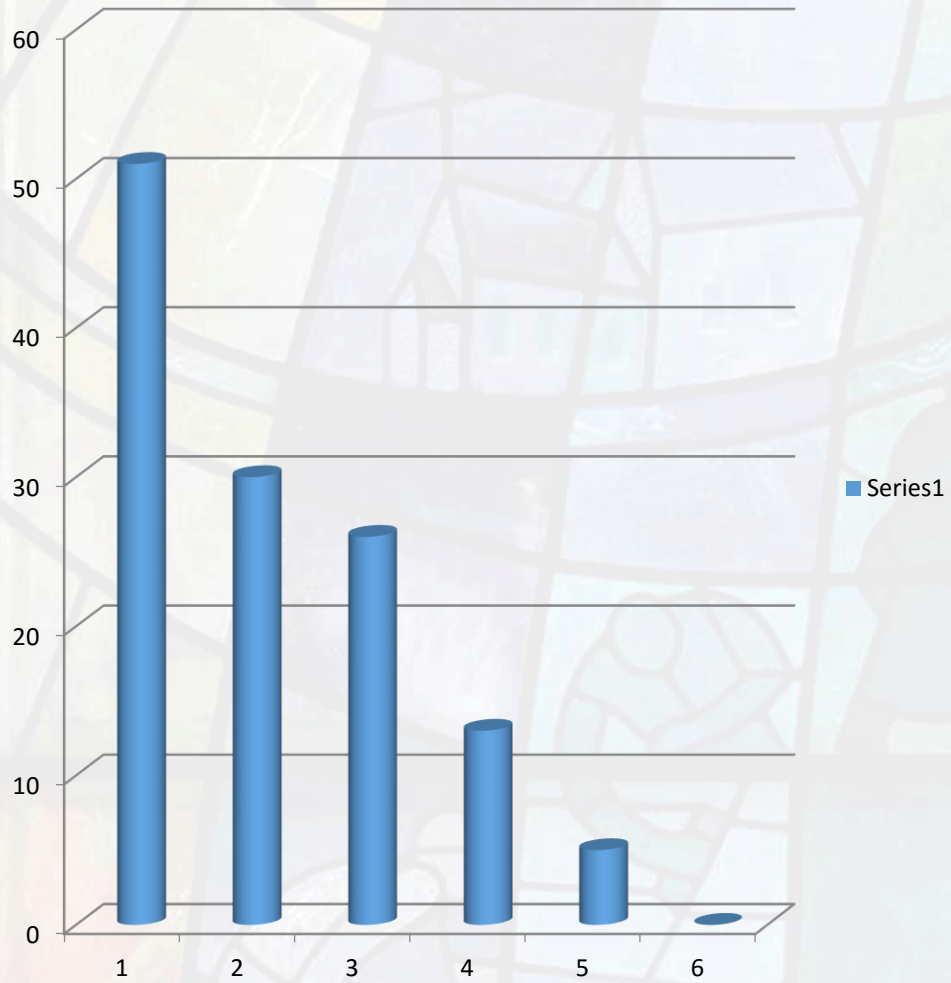
Year 3	% of students above the benchmark	% students above National Average
Writing	100	33
Grammar & Punctuation	95	45
Reading	95	11
Spelling	100	33
Numeracy	95	25

NAPLAN RESULTS

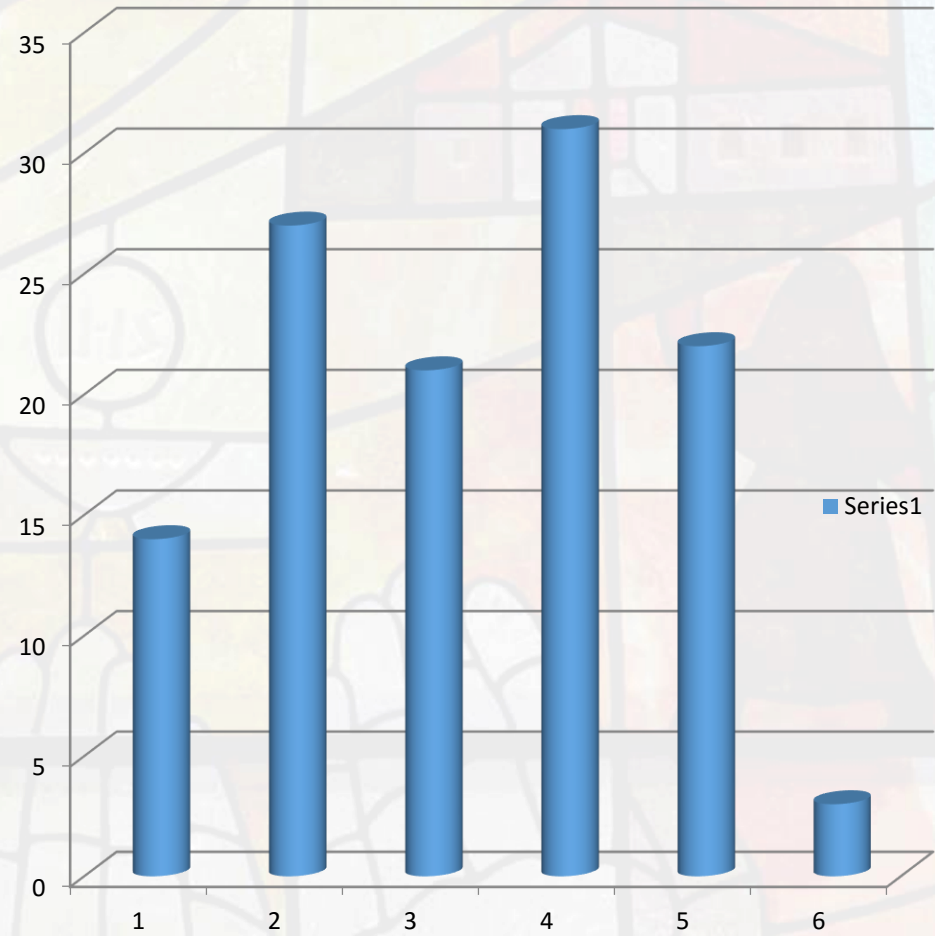
Year 5	% of students above the benchmark	% students above National Average
Writing	94	50
Grammar & Punctuation	94	50
Reading	94	20
Spelling	100	39
Numeracy	100	47

Spelling Results

Term 1



Term 4





Strategic Plan

2016-2019

LEARNING

EFFECTIVE PEDAGOGICAL PRACTICES (QCS REF 305)

- Develop a consistent school wide approach to the teaching of Literacy and Numeracy and lift student performance with a specific focus in the early primary years (K-2)
- Develop a consistent school wide approach to the extension of brighter students in the areas of Science, Technology and Maths (STEM) with a specific focus in the upper primary years (Year 3-6)
- Prioritise professional development activities focussed on building the data literacy skills of teachers and leaders plus developing engaging teaching practices

ANALYSIS & DISCUSSION OF DATA (QCS REF 302)

- Establish a systematic approach to collection, analysis and use of individual student achievement data to identify individual learning needs of students
- Establish regular time for school leaders to work with teams to review student data and develop improvement strategies

ENGAGEMENT

- ***ENGAGEMENT WITH SCHOOL COMMUNITY (QCS REF 201)***
- **Continue to strengthen relationships with families in our community and the Parish through promoting the schools' Core Values and Mission as a shared responsibility**
- **Increase parent involvement in the early years with a specific focus on assisting Literacy and Numeracy teaching and improvement**

ACCOUNTABILITY

TARGETED USE OF SCHOOL RESOURCES (QCS REF 304)

- Develop a School Marketing Plan and implement it in a systematic manner in order to maximise the single stream enrolment pattern of the school
- Plan for and progress changes to K-2 classrooms and playground facilities so that they continue to be contemporary, inspiring and compliant with requirements of the National Quality Standards (NQS)
- Prioritise budget allocations for:
 - Reading resources to support our learning focus
 - Time and resources to increase the focus on STEM subjects in the upper primary years
 - Professional Learning activities focused on building the data analysis skills of teachers
 - Professional Learning activities focussed on ways of developing engaging teaching practices

DISCIPLESHIP

INTEGRATING CATHOLIC FAITH, LIFE AND CULTURE (QCS REF 102)

- **Promote a strong understanding of the School Mission and Core Values and how they are an integral part of the Sacred Heart School culture and life**
-
- **Increase opportunities for parents and students to develop a commitment to Christian witness through provision of service to those in need in the community**

2016 INITIATIVES

- Increase the teaching of music to an hour a week
- Introduction of a Gifted and Talented program for years 4-6
- MULITLI: provide opportunities for students who experience problems in literacy to improve their results
- SEQTA.. online earning and to improve communication with parents and make what happens in a classroom more transparent
- ECE nature play area: improve the Early childhood playground area and assist teachers in that area with their indoor/outdoor program